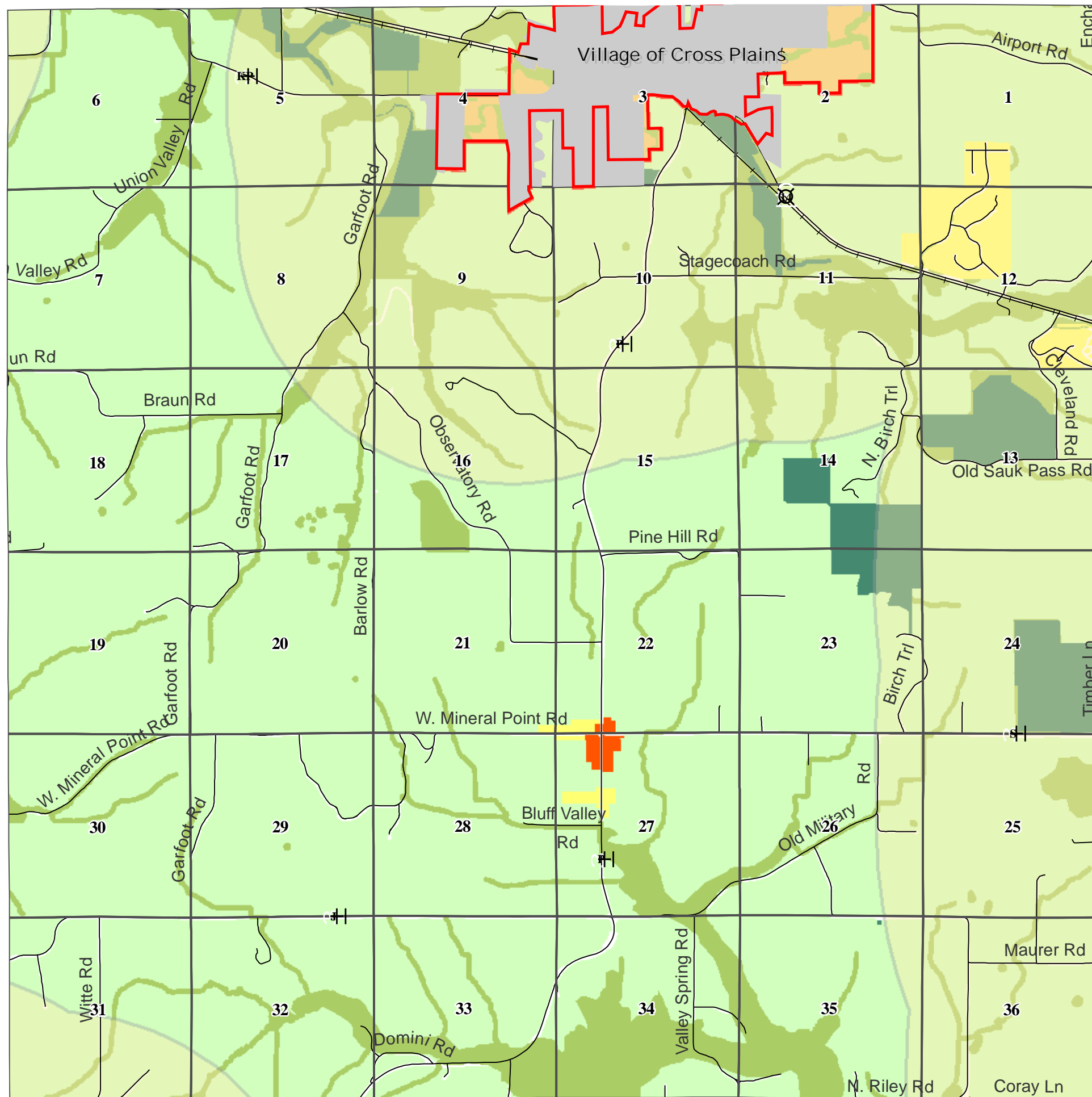


Town of Cross Plains

Planned Land Use

DRAFT



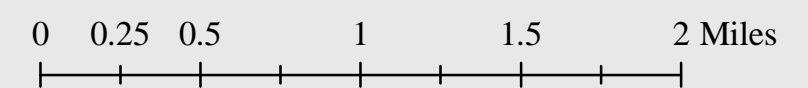
- Agricultural Preservation District
- Environmental & Resource Protection District
- Public Lands District
- Pine Bluff Crossroads District
- Rural Residential District
- City or Village ETJ

- Cross Plains Urban Service Area
- Railroad
- Road Centerlines
- Section Boundary
- Village of Cross Plains

Environmental Resource Protection District consists of the Capital Area RPC's Open Space Corridors, 100 year floodplain and 75 foot buffers around rivers/streams, lakes/ponds and wetlands.

DANE COUNTY
PLANNING & DEVELOPMENT

May, 2009



Source Info:
 Agricultural Preservation District: DCPD
 Cross Plains Village Boundary: 05/09, (DCPD)
 Cross Plains Urban Service Area: 05/09, (DCPD)
 Environmental & Resource Protection District: DCPD
 Pine Bluff Crossroads District: DCPD
 Public Lands: 05/09 (DCPD)
 Rural Residential District: DCPD

This map was prepared through the Dane County Department of Planning and Development in conjunction with the Dane County Land & Water Resources Department, Dane County Land Information Office and the Dane County Community Analysis & Planning Division.