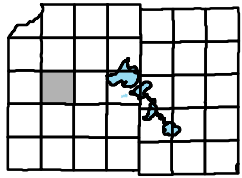
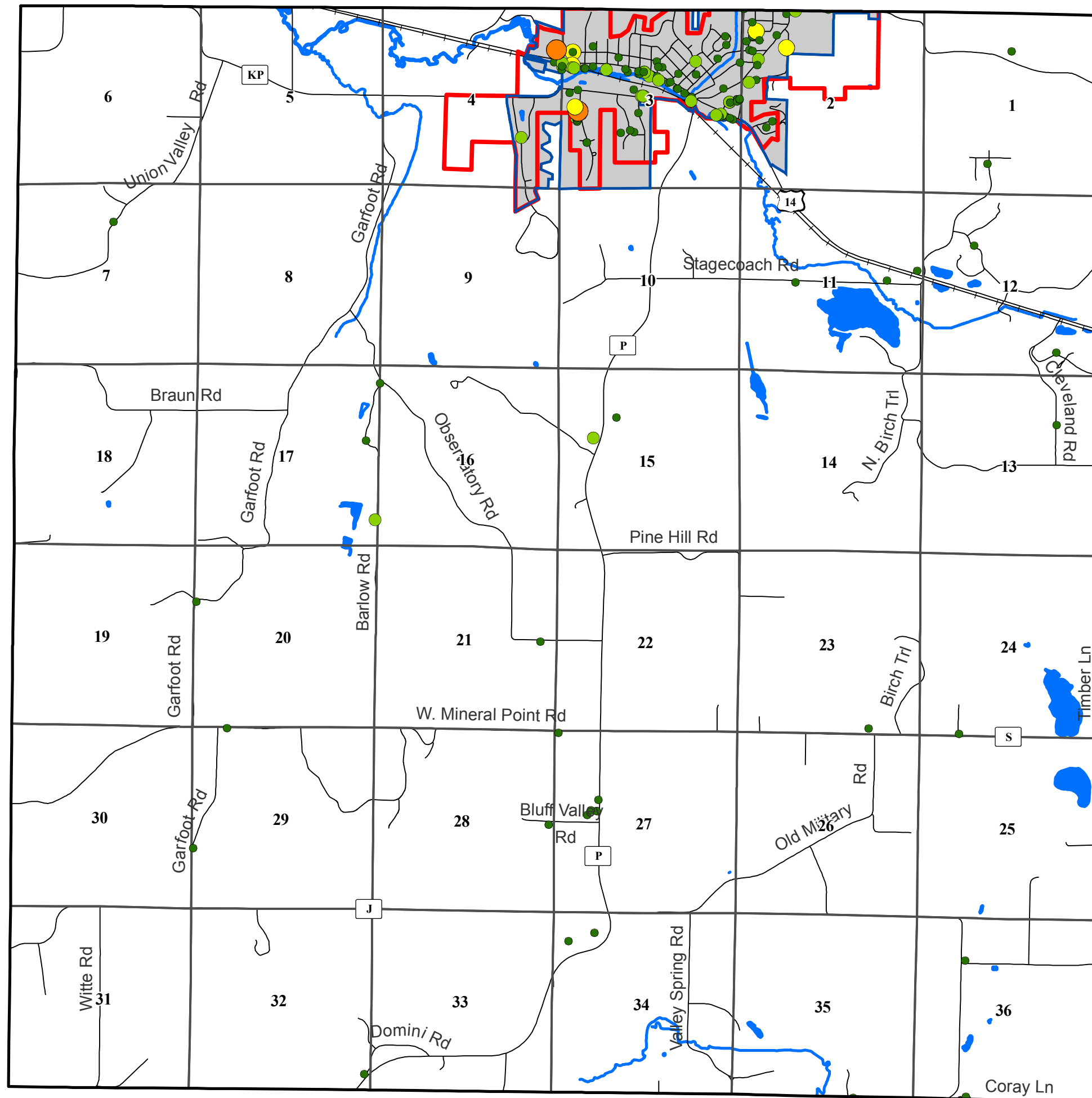


Town of Cross Plains



Map 24: Employment Points

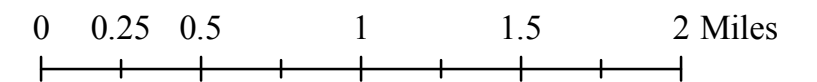
DRAFT



Businesses by Number of Employees

- 0 - 10
- 11 - 50
- 51 - 250
- 251 - 1000
- 1001 - 4500
- Cross Plains Village Boundary
- Cross Plains Urban Service Area
- Section Boundary
- +—+—+ Railroad

April, 2007



Source Info:
 Cross Plains Village Boundary: 01/2007 (DCPD)
 Employment Points: 2002, Claritas (MAMPO)
 Service Area: 04/2007 (DCCAPD)

This map was prepared through the Dane County Department of Planning and Development in conjunction with the Dane County Land & Water Resources Department, Dane County Land Information Office and the Dane County Community Analysis & Planning Division.