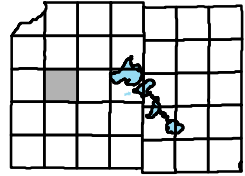
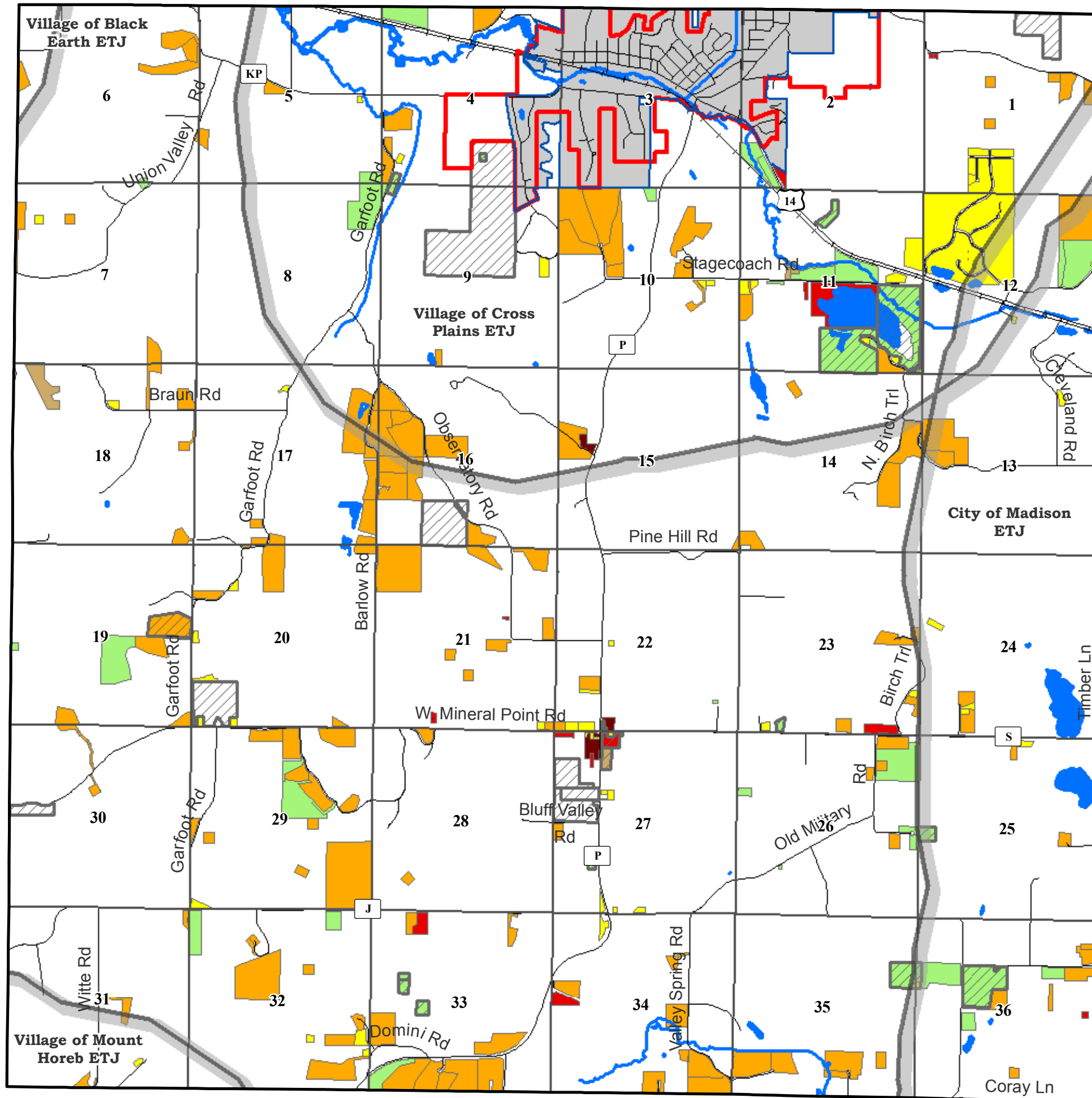


Town of Cross Plains



Map 25: Zoning

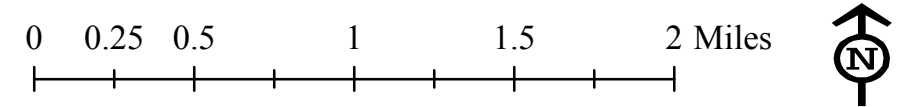
DRAFT



- ExtraTerritorial Jurisdiction
- Conditional Use Permit
- A-1, A-2, A-2(1), A-2(2), A-2(4), A-2(8), A-3, A-B
- B-1
- C-1, C-2, LC-1
- CO-1, EXP-1, H-D, M-1, RE-1
- R-1, R-1A, R-2, R-3, R-3A, R-4
- RH-1, RH-2, RH-3, RH-4
- Cross Plains Village Boundary
- Cross Plains Urban Service Area
- Section Boundary
- Railroad

ExtraTerritorial Jurisdiction refers to land division only.

April, 2007



Source Info:
 Cross Plains Village Boundary: 01/2007 (DCPD)
 Service Area: 04/2007 (DCCAPD)
 Zoning: 10/2006 (DCPD)

This map was prepared through the Dane County Department of Planning and Development in conjunction with the Dane County Land & Water Resources Department, Dane County Land Information Office and the Dane County Community Analysis & Planning Division.