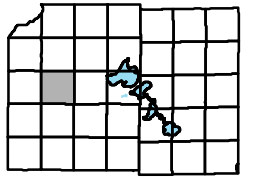


Town of Cross Plains



Map 4: Building Site Potential

DRAFT

Soil Potential Rating for Dwellings with Basements

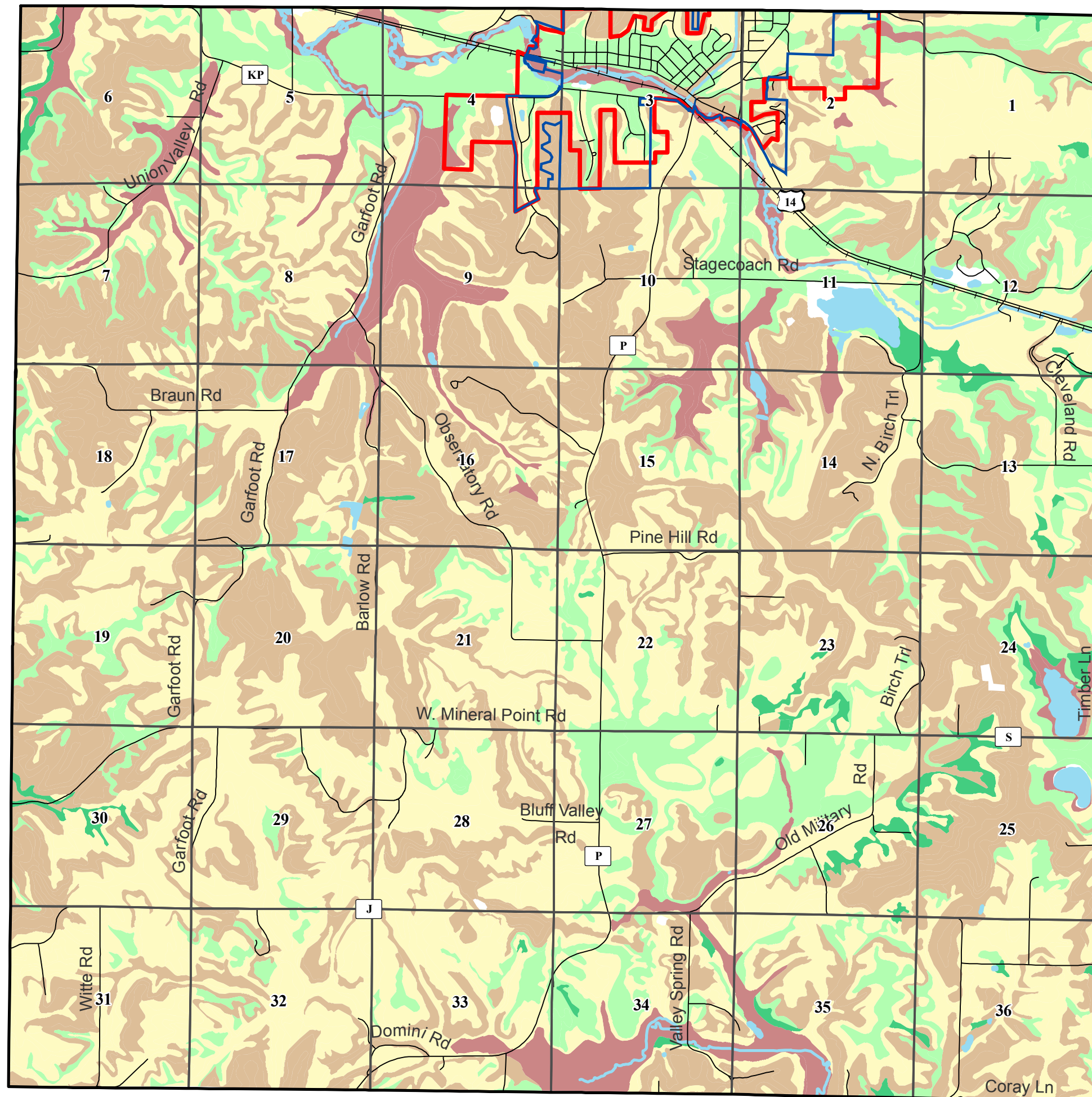
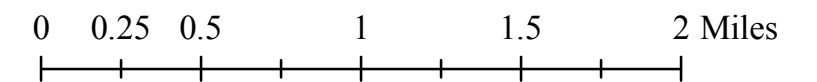
- Very high
- High
- Medium
- Low
- Very low

- Cross Plains Village Boundary
- Cross Plains Urban Service Area
- Section Boundary

Soil Potential Ratings are based on Natural Resources Conservation Service (NRCS) data. The purpose of the ratings is to identify the relative suitability of soils for a particular use considering economic, social, and environmental values.

Contact The Dane County Land and Water Resources Department for further details.

April, 2007



Source Info:
 Cross Plains Village Boundary: 01/07, (DCPD)
 Service Areas: 04/07, (DCPD)
 Soils: 2000, (DCLIO)

This map was prepared through the Dane County Department of Planning and Development in conjunction with the Dane County Land & Water Resources Department, Dane County Land Information Office and the Dane County Community Analysis & Planning Division.