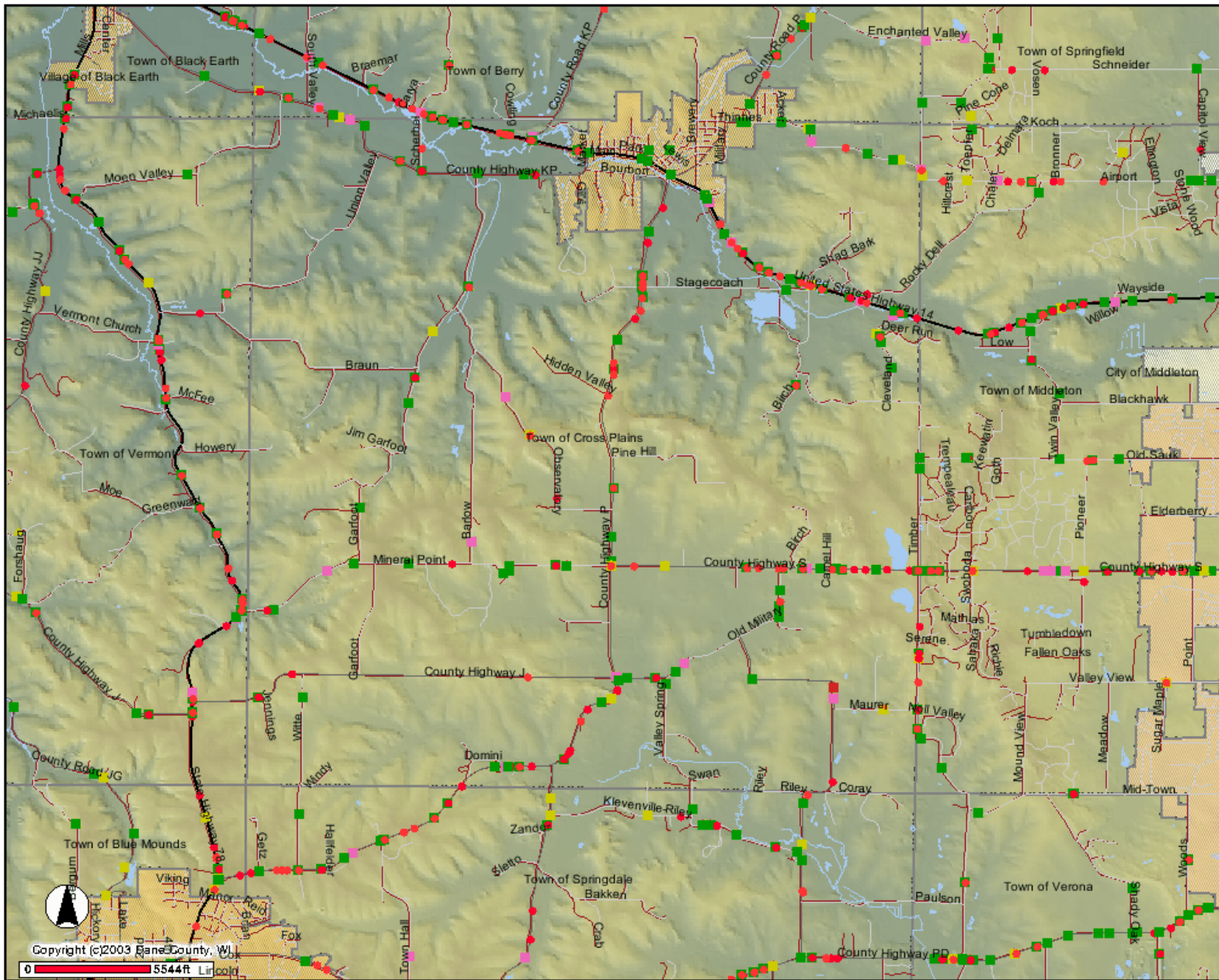
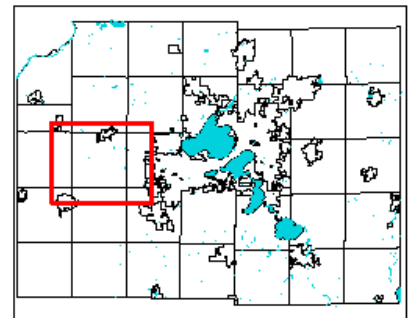


Dane County DCiMap

[Print/Close](#)



- 2001 Traffic Incidents by Deer**
- Deer Related
- 2001 Traffic Incidents by Injury**
- Incapacitation Injury
 - Non-Incapacitation Injury
 - Possible Injury
 - Fatal Injury
 - No Apparant Injury
- 2001 Traffic Incidents by Sobriety**
- ▲ No Information
 - ▲ Neither Alcohol or Drugs
 - ▲ Alcohol
 - ▲ Drugs
 - ▲ Both Alcohol and Drugs
 - ▲ Unknown
- 2002 Traffic Incidents by Deer**
- Deer Related
- 2002 Traffic Incidents by Injury**
- Incapacitation Injury
 - Non-Incapacitation Injury
 - Possible Injury
 - Fatal Injury



DCiMap

DISCLAIMER
 This map was prepared using the Dane County DCiMap online geographic information system. All information is believed accurate but is NOT guaranteed to be without error. This map and its underlying data is intended to be used as a general index to land related information and is not intended for detailed, site-specific analysis. Dane County GIS datasets used to produce this map are copyrighted.